

NOVEMBER 2012 £4.70

THE WORLD OF INTERIORS

MEWS MASTERPIECE:
Luxury Arrives at a London Coach House



THE UNKNOWN DOME:
Brighton Pavilion's Secret Chambers Unlocked

inspiration

Some of the design effects in this issue, recreated by Maria Yiannikou



1 Looking for a chandelier in the spirit of the 18th-century Genovese ones gracing KK Auchincloss's drawing room (page 140)?

Canopy Designs can shine a light on your search: 'Orleans' tear-drop chandelier costs \$1,850, and there are more than 30 different-coloured beads available to choose from. Ring 001 718 361 3040, or visit canopydesigns.com.

2 If you're green with envy over the wall-covering that lines the library at Mrs Auchincloss's Paris apartment (page 142), Tassinari & Chatel will appease you. The Lyon-based weaver's 'Trianon 1664-04' silk damask is available from Lelièvre, and costs £281 per m. Ring 020 7352 4798, or visit lelievre.eu.

3 Settle down on a bergère armchair like the one in the library at *maison* Auchincloss (page 145). Du Bout du Monde's 'Namur' is a similar design, and costs £452 approx. Ring 00 33 3 23 65 63 68, or visit duboutdumonde.com.

4 Mrs Auchincloss's dining-room table and entrance-hall walls are decorated with Braquenié's 'Marquis de Seignelay' (top) and Pierre Frey's 'Petit Parc' fabrics (page 147). For these designs in the same or alternative colourways, go to Pierre Frey itself. They cost £139.20 and £201.60 per m respectively. Ring 020 7376 5599, or visit pierrefrey.com.

5 Fancy bedding down on a glamorous four-poster like the one at KK Auchincloss's Parisian apartment (page 149)? La Maison's reproduction 'Lit à la Polonaise' is just the thing. It is made to order, hand-carved and finished using traditional methods. Prices start from £8,700. Ring 020 729 9646, or visit atlamaison.com.

6 Sheets of polished pebbles cover sections of Portugal's Solmar restaurant (page 171). I've left no stone unturned in my search for something similar, and here it is: Lapidica's 'Mosaic Pebble Border' costs £34.86 per linear m. Ring 020 3012 1000, or visit lapidica.com.



6

7 Antonio and Manuel Paramès opened their seafood restaurant, Solmar (page 168), in the mid-1950s, and it is filled with colours from the period. To get your hands on these hues, seek out Fired Earth's 'Mid-Century' range, which includes this 'Race Yellow' and 'Festival Orange'. The paints cost £31.50 per 2.5 litres of matt emulsion, or £18.50 per 750 ml of egg-shell. Ring 020 7258 9990, or visit firedearth.com.



7

8 Coveting the plate collection that decorates Maia Geheb and Rob Burnet's kitchen shelves in Kenya (page 121)? Emulate it by going to the Wallace Collection in London, which serves up tasty tin plates with designs taken from 18th-century Sèvres porcelain. They cost £4.99 each. Ring 020 7563 9500, or visit wallacecollection.org.



8

9 Maia Geheb and Rob Burnet decided to paint their kitchen floor themselves, and Rob says they were virtually crippled by the hard work (page 121). Why not leave it to the professionals? Brian Leaver is a US-based decorative painter and his repertoire includes this geometric design. Prices start from \$20 per sq ft. Ring 001 631 513 3967, or visit brianleaver.com.

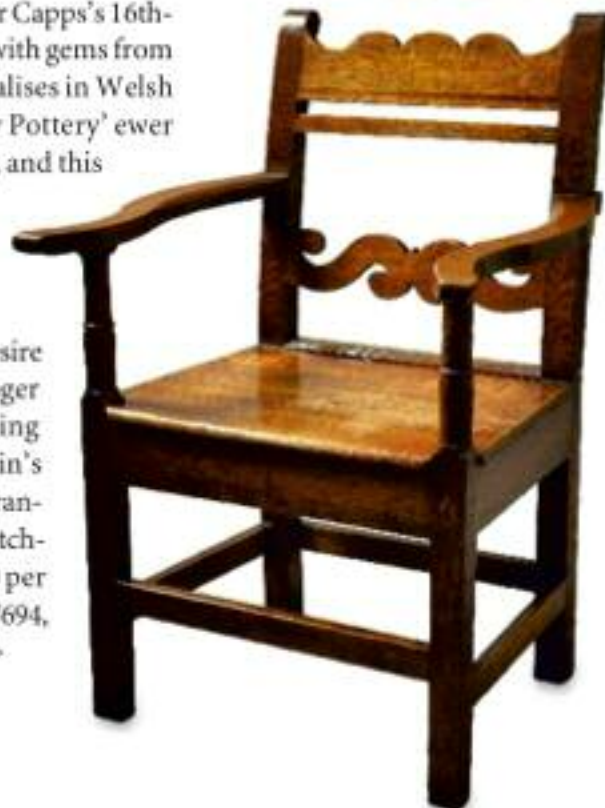


10



9

10 Capture the spirit of Roger Capps's 16th-century hall house (page 156) with gems from Tim Bowen Antiques. It specialises in Welsh wonders such as this 'Buckley Pottery' ewer with black glaze, c1800 (£450), and this oak armchair, c1820 (£880). Ring 01267 267122, or visit timbowenantiques.co.uk.



11 Don't brush aside your desire for the limewash colours at Roger Capps's Welsh borders dwelling (page 156). We show 'Benjamin's Oxblood' and 'Jali Grey' from Francesca's Paints – they're close matches, and cost £28.44 and £20.60 per litre respectively. Ring 020 7228 7694, or visit francescaspaint.com ▷



11

